

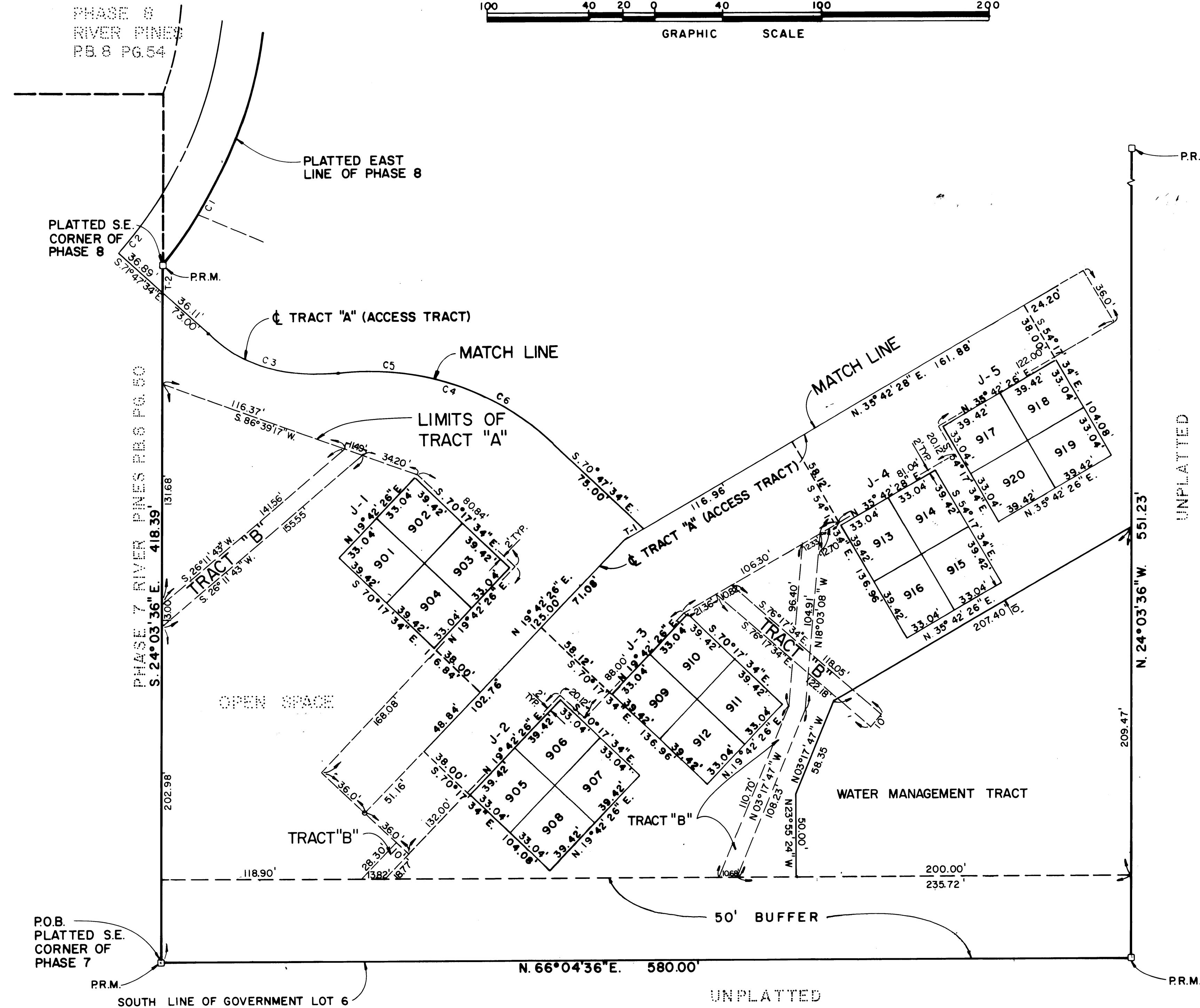
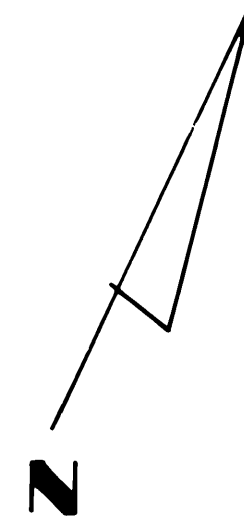
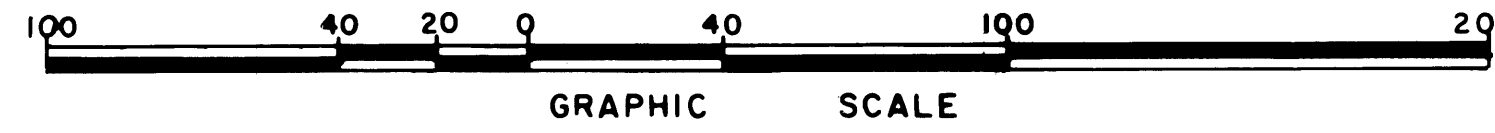
# RIVER PINES

## AT MILES GRANT

### PHASE 9 OF A P.U.D.

A SUBDIVISION OF GOVERNMENT LOTS 3 & 6,  
IN SECTIONS 20 & 29, TOWNSHIP 38 SOUTH, RANGE 42 EAST,  
MARTIN COUNTY, FLORIDA, FEB. 1981

PL-68  
PG 57



NOTE:  
FOR CURVE TABLE, SEE SHEET 1 OF 5.

ADAIR & BRADY, INC. CONSULTING ENGINEERS & LAND SURVEYORS		DATE 2/81	
LAKELAND WEST PALM BEACH ORLANDO		DATE 2/81	
SCALE 1" = 40'	OWN G.M.W.	CHKD J.L.K.	PG.
JOB NO. 6-8525B	F.B.	PG.	

RIVER PINES  
AT MILES GRANT

FP 1155  
SHEET 5 of 5